

EXPEX LED SERIES

Explosion Proof Edge Lit LED Exit Light



Features

- Emergency battery back-up integral to sign (no additional enclosure required)
- 3-hour emergency operation
- Optional battery back-up self-diagnostic feature
- Field replaceable LED circuit boards and drivers with quick disconnects
- Edge-lit sign
- Wall, pendant and end mounting options
- Alternate exit legend and languages available
- Single- or double-sided option
- Sealed NiCad batteries
- Provided with three (3) 1/2" NPT hubs
- Red or green LED options

Standard Materials

- Body: A356T6 aluminum (less than .4% copper content) with baked-on gray epoxy finish
- Gasket: One-piece silicone
- Sign: Acrylic
- Hardware: Stainless steel

Maximum Input Power

- Red no battery - 1.5 Watts
- Red with battery - 2.5 Watts
- Green no battery - 2.3 Watts
- Green with battery - 3.0 Watts

Operating Temperature Range

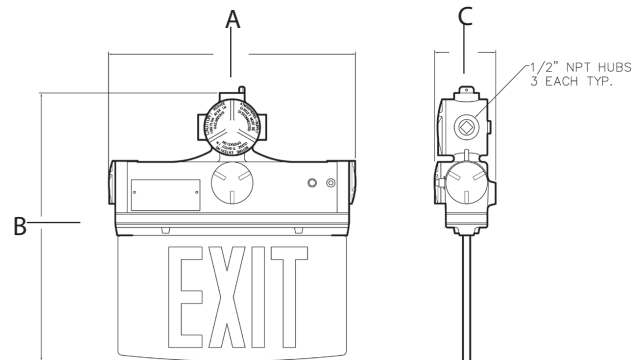
- Temperature Rating - T6 Red Legend
- +10°C Minimum to +55°C Maximum Green Legend
- +10°C Minimum to +40°C Maximum



Classifications

- Class I, Division 1, Groups C & D
- Class II, Division 1, Groups E, F & G
- Class III
- Class I, Zone 1, Groups IIA, IIB,
- Zone 2, Groups IIA, IIB + H2 & IIC
- UL 844, 8750 & UL924
- UL 1598A Marine Outside Type
- Temperature Class (T-Rating)-T6
- Patent No. 7,287,347
- IP65

Dimensions



Ordering Information

| EXPEX SERIES | Dimensions (inches) | | | Boxed Weight | Shipping Volume (Boxed Fixtures) |
|---------------------------|---------------------|------|-------|--------------|----------------------------------|
| | A | B | C | | |
| EXPEX LED Exit Sign/Light | 14.88 | 3.69 | 16.00 | 14 lbs. | 1.24 cu. ft. |

Product Number: EXPEX LED SERIES BS: NF: LC: V/F: M: O:

| Basic Series | No. of Faces | Legend Color | Voltage/ Frequency | Mounting | Options |
|---|------------------------------------|----------------------|---|--|--|
| EXPEX Explosion Proof LED Exit Light Class I, Division 1, Groups C, & D Class II, Division 1 & 2, Groups E, F & G Class III Class I, Zone 1, Groups IIA, IIB, Zone 2, Groups IIA, IIB + H2 & IIC Marine Outside Type UL 1598A, 8750, 844 & 924 IP65 Temperature Class (T-Rating)-T6 | 1 = Single Face 2 = Double Face | R = Red G = Green | DT = 120/277V 60HZ 24 = 220-240V 50/60HZ Other voltages available - consult factory | WP = Wall/ Pendant Mounting EB = End Bracket | EM = Emergency Battery Backup EU = Green Running Man Exit Legend SD = Self Diagnostics X = Exit Legend in Other Languages Language Must Be Specified |